

# How to permanently pair

Try wiipair gui first.

1. Use red button on wiimote and click ezpair

2. there is no step 2 although you may want to do this:

## *Connecting the Wiimote is slow and requires multiple attempts*

If your Wiimote connection is slow and fails occasionally, it may be caused by Windows Update trying to search online for drivers. For Windows 7, the operating system has this option configured by default. As the installation process is longer due to Windows Update, the Wiimote may be switched off before the connection has been completed and thus causing the connection failure.

If installing the drivers from Windows Update is disabled and other configurations are set up correctly, the Wiimote should be connected in about 10 seconds each time.

### Solution

Disable the automatic installation of drivers from Windows Update according to the following instructions.



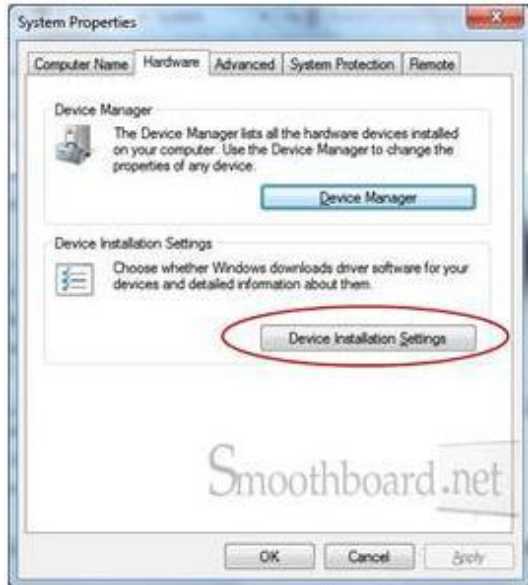
Open Control Panel

Click on System



Click on Advanced system settings

## How to permanently pair



In the System Properties window, select the Hardware tab

Click on *Device Installation Settings*



Select *No, let me choose what to do*

Select *Install device software from Windows Update if it is not found on my computer*

Click on the *Save Changes* button